



# Loewe **home.cinema sets**

Soundbar, subwoofer and surround speaker in a set

Complete system with klang bar5 mr & klang sub5 as well as klang mr speakers  
 Ready to play wireless thanks to pre-configured plug & play settings  
 Immersive 3D sound experience with discrete surround speakers  
 Loewe wireless digital audiolink for lossless and latency-free signal transmission  
 Expandable to multiroom audio with Apple AirPlay, Google Cast and DTS Play-Fi



## Loewe **klang bar5 mr & klang sub5**

Active 5.1.2 Dolby Atmos soundbar with wireless subwoofer and HDMI eARC  
 800 watts total music power  
 Dolby Atmos, DTS:X and DTS Virtual:X support  
 Fits perfect to TV sets 55 inch or bigger

## Loewe **klang mr5 | mr3 | mr1**

Wireless active speakers for multichannel surround sound and multiroom audio  
 180 watts | 150 watts | 30 watts total music power  
 Touch panel made of real glass on top cover  
 Five favourite buttons for free selectable sources

# Loewe klang bar5 mr & klang sub5

Active soundbar and subwoofer set



## Dolby Atmos soundbar.

With a total music output of 440 watts crystal-clear, powerful 3D Dolby Atmos sound is guaranteed. Dolby Atmos, Dolby Atmos Music and DTS:X ensure an immersive movie experience.

The result: breathtaking three-dimensional surround sound like in a cinema or concert hall.



## Multichannel and multiroom.

Three HDMI connections and 4K pass-through leave nothing to be desired when connecting to UHD players, set-top boxes and game consoles.

The multichannel platform makes expanding the system a breeze, as additional klang mr speakers can be added to the existing setup in seconds.



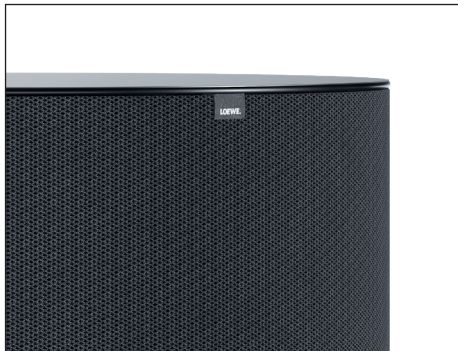
## Versatile streaming options.

Apple AirPlay, Google Cast and Bluetooth provide a variety of services such as Spotify, Amazon Music, Tidal, Deezer and Internet radio. Stream your favourite content at the touch of a button.



## The subwoofer: invisible power.

The round and pleasing 360° design allows to place the wireless subwoofer almost anywhere. Its powerful and controlled low-frequency sound spreads evenly and non-localisable throughout the room – without disturbing the neighbours with structure-borne noise: Thanks to the clever design with a precisely balanced, mirrored construction in hexagonal arrangement, it always remains outwardly vibration-free at peace in itself.



## Elegance and perfection in every detail.

A lacquered stainless steel plate covers the top of the subwoofer and simultaneously dampens any interfering stimulus through its sheer mass. The special two-yarn woven and robust acoustic fabric creates a vivid visual plasticity. The power connection and level control are unobtrusive located on the bottom and rear panels. The Loewe system colour basalt grey and the typical Loewe signature flag round off the harmonious 360° design.



## Bigger inside than outside.

The active subwoofer delivers a total music output of 360 watts and has in total of more than 1.000 cm<sup>2</sup> of effective membrane surface from 2 active 6-inch drivers and 4 passive radiators. This means it can easily play down to 35 Hertz low frequency and offers an astonishingly impressive bass foundation in the home cinema. The Loewe Wireless Digital Audio Link 2.0 ensures lossless and latency-free signal transmission.

## System component

### Loewe klang sub5

Any number of klang sub5 can be connected to a klang bar3 mr or klang bar5 mr at the same time

### Colour

■ basalt grey



### Model

klang sub5

### Article

60603

Data sheet

Loewe **home.cinema sets**

December 2023

# Loewe klang mr5 | mr3 | mr1

Wireless active speakers for home cinema and multiroom audio



## Multichannel home cinema.

Loewe wireless digital audiolink (second generation) for lossless and latency-free wireless signal transmission in multichannel home cinema with Loewe klang mr as the active surround speakers.

## Multiroom audio

DTS Play-Fi, Apple Airplay and Google Cast offer a variety of services such as Spotify, Amazon Music, Tidal, Deezer and Internet radio.

## Bluetooth direct streaming.

Connect your mobile phone via Bluetooth directly to the speaker and enjoy your playlist.



## Touch surface.

The glass touch panel on the top is easy to operate and offers space for up to five favourites, which can be compiled from any source.



## Powerful sound.

The layout of the speakers in combination with passive radiators creates a perfectly balanced sound experience with 30 / 150 / 180 watts - with powerful bass and crystal clear high tones.



## Elegant.

The design is refined and elegant. The glass top with integrated touch panel and illuminated status LED is a tribute to the Loewe eye. The cabinet is covered with our high-quality acoustic fabric and blends perfectly into your living environment.

## System component

### Loewe remote klang mr

Multifunctional IR remote control for Loewe klang mr and Loewe klang bar to operate all basic functions and sound settings

### Colour

 black



### Model

remote klang mr

### Article

74000

# Loewe klang bar5 mr & klang sub5

Active soundbar and subwoofer set

## Achievements



reddot winner 2021



**“The klang bar5 mr together with the klang sub5 hits the spot.”**

Audio Video Foto Bild, edition 12/2022 about klang bar5 mr incl. klang sub5  
test score 1,4 VERY GOOD

**“The Loewe klang bar5 mr with the sub5 is (...) a real pleasure to listen to.”**

HiFi Test, edition 5/2022 about klang bar5 mr incl. klang sub5  
test score Reference Class, 1+, HIGHLIGHT

# Loewe klang mr5 | mr3 | mr1

Wireless active speakers for home cinema and multiroom audio

## Achievements



reddot winner 2022



**“The Loewe klang mr5 is both optically and acoustically a true statement.”**

HIFI.DE, 18. March 2023 about klang mr5  
test score 8.6 VERY GOOD

**“Der Loewe klang mr3 is a speaker that meets the highest demands.”**

HIFI.DE, 21. March 2023 about klang mr3  
test score 8.5 VERY GOOD

**“Der Loewe klang mr1 is enormous flexible and fits practically in every scenario.”**

HIFI.DE, 5. March 2023 about klang mr1  
test score 8.4 GOOD

**“Balanced and pleasant tuning, clean bass and practically unaltered timbres.”**

Audio Video Foto Bild, edition 12/2022 about klang mr3  
TEST WINNER, 1st place, test score 2,1 GOOD

# Loewe **home.cinema sets**

Soundbar, subwoofer and surround speaker in a set

## Set variants

### Loewe home.cinema set 553

complete set with:

- 1x Loewe klang bar5 mr & klang sub5
- 2x Loewe klang mr5
- 2x Loewe klang mr3

### Colour

 basalt grey

### Model

home.cinema set 553

### Article

63611

home.cinema set 531

63610

### Loewe home.cinema set 531

complete set with:

- 1x Loewe klang bar5 mr & klang sub5
- 2x Loewe klang mr3
- 2x Loewe klang mr1

## Setup solutions


### Loewe floor stand flex

Floor stand for bild v, bild i, bild c and We. SEE in combination with klang bar5 mr and klang bar3 mr

W x H x D = 54,0 x 73,5 x 54,0 cm

Weight = 23,5 kg

manually rotatable (+/-45°), concealed cable guide, with equipment board and adapter for sound bar

 basalt grey



floor stand flex

60800

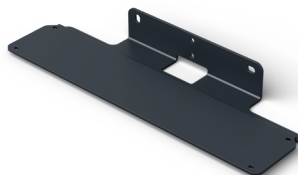
### Loewe wall mount klang bar

Wall mount for mounting the Loewe klang bar5 mr or Loewe klang bar3 mr

W x H x D = 40 x 5 x 13,2 cm

Weight = 1,2 kg

 black



wall mount klang bar

60810

### Loewe spacer table stand v

Spacer between TV and table stand

W x H x D = 5,2 x 5,7 x 5,2 cm

Weight = 0,8 kg

 black



spacer table stand v

60811

### Loewe spacer table stand i

Spacer between TV and table stand

W x H x D = 5,3 x 6,3 x 5,3 cm

Weight = 0,2 kg

 basalt grey



spacer table stand i

60812

Data sheet

Loewe **home.cinema sets**

December 2023

# Loewe klang bar5 mr & klang sub5

Active soundbar and subwoofer set



All product and company names are trademarks™ or registered® trademarks of their respective holders. Use of them does not imply any affiliation with or endorsement by them. Google and Chromecast built-in are trademarks of Google LLC.

## Technical data

Loewe klang	bar5 mr
<b>Audio (acoustic)</b>	
Frequency range (Hz) @ ±3 dB	60-20.000
Orientation front / side / up / rear firing	● / ● / ● / —
Acoustic speaker concept	closed bar + klang sub5
Channel configuration (speaker layout)	5.1.2 (surround)
Driver total amount	11
Driver active	4x 48 x 90 mm, 3x 0.75", 2x 44 x 74 mm, 2x 3"
2-channel crossover	● active
<b>Audio (electric)</b>	
Frequency range (Hz) @ ±1 dB	100-20.000 + 10-200
Class-D amp	●
Power (watts sine / music)	220 / 440
Total harmonic distortion @ 1 watt / 10 watts	< 0,5
Dynamic range / Signal to noise ratio (dB)	24 bit / > 75
Bass and treble control / loudness	● (remote) / dynamic
Balance / gain adjustment (dB)	— / ● (+/- 6 dB)
Protection circuit: heat / current / voltage / short cut	● / ● / ● / ●
Dolby Audio / Digital / Digital Plus / Volume / Atmos / Atmos Music	● / ● / ● / ● / ● / ●
DTS HD / DTS:X	● / ●
<b>Operation and apps</b>	
Display technology	White D-LED
Screen resolution (pixels)	5 x 16 segments
Screen diagonal (cm / inch)	6 / 2,4
my Loewe app / smart apps (all: Android + iOS)	● (DTS Play-Fi)
Voice control by Alexa skills	●
Software update (via USB / Internet)	● / ● (DTS Play-Fi)
<b>Media and reception</b>	
USB music player	●
Bluetooth music player	●
Internet radio	● (via DTS Play-Fi app)
DTS Play-Fi / Hi-Res Audio	● / ●
Spotify Connect / Google Cast / Apple AirPlay	● / ● / ●
Multiroom audio support	●
Multichannel home cinema support	●
<b>Connectivity and interfaces</b>	
HDMI	2 x HDMI 2.0b (incl. 4K pass-through)
HDCP 2.2 / HDMI-CEC / ARC / eARC	● / ● / ● / ●
USB	1 x USB 2.0
Bluetooth	●
WLAN (Wi-Fi) integrated	●
Wireless Digital Audiolink (second generation)	●
Optical TOSLINK	●
Analogue audio jack in (3.5 mm stereo)	●
Wall mount	○
<b>Network and formats</b>	
WLAN (Wi-Fi) standard	IEEE 802.11a/b/g/n/ac
WLAN (Wi-Fi) power (max. mW)	<100
WLAN (Wi-Fi) frequency range	2400-2483,5 / 5150-5725 MHz
WLAN (Wi-Fi) encryption	WEP 64, 128 Bit (ASCII, HEX)
WLAN (Wi-Fi) encryption WPA	WPA PSK, WPA2 AES, WPS
Bluetooth standard	4.2
Bluetooth power (max. mW)	<10
Bluetooth frequency range	2.4 GHz
Bluetooth protocols	A2DP, SNK, AVRCP
Supported audio formats	MP3, AAC, AAC+, M4A, WAV, FLAC, PCM, Dolby True HD, Dolby Audio, Dolby Digital, Dolby Digital Plus, Dolby Atmos, Dolby Atmos Music, DTS, DTS HD, DTS Virtual X, DTS Play-Fi, Hi-Res AUDIO 4K Video Pass-Through, Dolby Vision, DR10, HDR10+
<b>Supported video formats</b>	
<b>Energy and environment</b>	
Mains voltages AC	100-240V, 50/60 Hz
Power consumption eco standby mode (watts)	0,5
Power consumption multiroom sleep mode (watts)	6
Ambient temperature while in operation	5-35° C
Relative humidity (non-condensing)	20-80%
<b>Dimensions</b>	
Weight (approx. kg)	6,5 + 8,8
W* x H x D (approx. cm)	120,0 x 7,1 x 16,0
<b>Scope of Delivery</b>	
Remote control (incl. batteries)	Loewe remote klang mr (2x CR2032)
Manual / power cord	● / ●
Others	klang sub5, HDMI cable
<b>Optional accessories</b>	
Selection of recommended setup solutions and audio systems	bild i, floor stand flex, spacer table stand v, spacer table stand i, wall mount klang bar klang mr5, klang mr3, klang mr1, klang sub5

## Technical data

Loewe klang	sub5
<b>Audio (acoustic)</b>	
Frequency range (Hz) @ ±3 dB	35-150
Orientation front / side / up / rear firing	radial (motion compensation)
Acoustic speaker concept	closed + passive membranes
Channel configuration (speaker layout)	0.1 (subwoofer)
Driver total amount	6
Driver active	2x 6"
Driver passive	4x 6"
2-channel crossover	● low pass
<b>Audio (electric)</b>	
Frequency range (Hz) @ ±1 dB	10-200
Class-D amp	●
Power (watts sine / music)	180 / 360
Total harmonic distortion @ 1 watt / 10 watts	< 1
Dynamic range / Signal to noise ratio (dB)	16 bit / > 60
Bass and treble control / loudness	● (gain adjustment) / —
Balance / gain adjustment (dB)	— / ● (via volume knob)
Protection circuit: heat / current / voltage / short cut	● / ● / ● / ●
<b>Media and reception</b>	
Multiroom audio support	● (via klang bar mr)
Multichannel home cinema support	●
<b>Connectivity and interfaces</b>	
Bluetooth	—
Wireless Digital Audiolink (second generation)	●
Analogue audio jack in (3.5 mm stereo)	●
<b>Network and formats</b>	
WLAN (Wi-Fi) standard	—
WLAN (Wi-Fi) power (max. mW)	<100
WLAN (Wi-Fi) frequency range	5725-5850 MHz
WLAN (Wi-Fi) encryption	—
WLAN (Wi-Fi) encryption WPA	—
<b>Energy and environment</b>	
Mains voltages AC	100-240V, 50/60 Hz
Power consumption eco standby mode (watts)	0,5
Power consumption network standby mode (watts)	0,5
Ambient temperature while in operation	5-35° C
Relative humidity (non-condensing)	20-80%
<b>Dimensions</b>	
Weight (approx. kg)	8,8
W* x H x D (approx. cm)	38,0 x 21,4 x 38,0
<b>Scope of Delivery</b>	
Manual / power cord	● / ●
Others	—
<b>Optional accessories</b>	
Selection of recommended setup solutions and audio systems	klang bar5 mr, klang bar3 mr iconic v, iconic i

● = available, ○ = optional, — = not available

Technical changes and delivery options are subject to change without notice. The product portfolio may be different and might vary depending on the country. Service matters are all handled individually.

Data sheet

Loewe **home.cinema sets**

December 2023

# Loewe klang mr5 | mr3 | mr1

Wireless active speakers for home cinema and multiroom audio



All product and company names are trademarks™ or registered® trademarks of their respective holders. Use of them does not imply any affiliation with or endorsement by them. Google and Chromecast built-in are trademarks of Google LLC.

## Technical data

### Loewe klang

	mr5	mr3	mr1
<b>Audio (acoustic)</b>			
Frequency range (Hz) @ ±3 dB	35-20.000	40-20.000	55-20.000
Orientation front / side / up / rear firing	●/●/—/●	●/●/—/●	●/—/—/—
Acoustic speaker concept	closed + passive membranes	closed + passive membranes	closed
Channel configuration (speaker layout)	1.0 (mono)	1.0 (mono)	1.0 (mono, rear surround)
Driver total amount	9	6	1
Driver active	3x 3/4", 3x 2.5", 1x 5"	3x 2", 1x 3.5" + 2x 3.5"	1x 3"
Driver passive	2x 5"	2x 3.5"	—
2-channel crossover	● active	● active	—
<b>Audio (electric)</b>			
Frequency range (Hz) @ ±1 dB	20-20.000	20-20.000	20-20.000
Class-D amp	●	●	●
Power (watts sine / music)	90 / 180	75 / 150	15 / 30
Total harmonic distortion @ 1 watt / 10 watts	< 0.3 / < 0.3	< 0.3 / < 0.3	< 0.3 / < 0.3
Dynamic range / Signal to noise ratio (dB)	24 bit / > 80	24 bit / > 80	24 bit / > 80
Bass and treble control / loudness	● (remote) / dynamic	● (remote) / dynamic	● (remote) / dynamic
Protection circuit: heat / current / voltage / short cut	●/●/●/●	●/●/●/●	●/●/●/●
Dolby Audio / Digital / Digital Plus / Volume / Atmos / Atmos Music	via klang bar mr	via klang bar mr	via klang bar mr
DTS HD / DTS:X	via klang bar mr	via klang bar mr	via klang bar mr
<b>Operation and apps</b>			
Display technology	White LED + Color LED	White LED + Color LED	White LED + Color LED
Screen resolution (pixels)	5x dot + 1x line	5x dot + 1x line	5x dot + 1x line
Screen diagonal (cm / inch)	6 / 2,4	6 / 2,4	6 / 2,4
my Loewe app / smart apps (all: Android + iOS)	● / DTS Play-Fi app	● / DTS Play-Fi app	● / DTS Play-Fi app
Voice control by Alexa skills	●	●	●
Software update (via USB / Internet)	●/●(DTS Play-Fi)	●/●(DTS Play-Fi)	●/●(DTS Play-Fi)
<b>Media and reception</b>			
USB music player	●	●	●
Bluetooth music player	●	●	●
Internet radio	● (via DTS Play-Fi app)	● (via DTS Play-Fi app)	● (via DTS Play-Fi app)
DTS Play-Fi / Hi-Res Audio	●/●	●/●	●/●
Spotify Connect / Google Cast / Apple AirPlay	●/●/●	●/●/●	●/●/●
Multiroom audio support	●	●	●
Multichannel home cinema support	●	●	●
<b>Connectivity and interfaces</b>			
USB	1 x USB 2.0 (SW update)	1 x USB 2.0 (SW update)	1 x USB 2.0 (SW update)
Bluetooth	●	●	●
WLAN (Wi-Fi) integrated	●	●	●
LAN network connection	●	●	●
Wireless Digital Audiolink (second generation)	●	●	●
Analogue audio jack in (3.5 mm stereo)	●	●	●
Wall mount	—	—	●
<b>Network and formats</b>			
WLAN (Wi-Fi) standard	IEEE 802.11a/b/g/n/ac	IEEE 802.11a/b/g/n/ac	IEEE 802.11a/b/g/n/ac
WLAN (Wi-Fi) power (max. mW)	<100	<100	<100
WLAN (Wi-Fi) frequency range	2400-2483,5 / 5150-5850 MHz	2400-2483,5 / 5150-5850 MHz	2400-2483,5 / 5150-5850 MHz
WLAN (Wi-Fi) encryption	WEP 64, 128 Bit (ASCII, HEX)	WEP 64, 128 Bit (ASCII, HEX)	WEP 64, 128 Bit (ASCII, HEX)
WLAN (Wi-Fi) encryption WPA	WPA PSK, WPA2 AES, WPS	WPA PSK, WPA2 AES, WPS	WPA PSK, WPA2 AES, WPS
Bluetooth standard	4.2	4.2	4.2
Bluetooth power (max. mW)	<10	<10	<10
Bluetooth frequency range	2,4 GHz	2,4 GHz	2,4 GHz
Bluetooth protocols	A2DP SNK, AVRCP	A2DP SNK, AVRCP	A2DP SNK, AVRCP
Supported audio formats	MP3, M4A, AAC, FLAC, WAC, AIFF, Hi-Res AUDIO	MP3, M4A, AAC, FLAC, WAC, AIFF, Hi-Res AUDIO	MP3, M4A, AAC, FLAC, WAC, AIFF, Hi-Res AUDIO
<b>Energy and environment</b>			
Mains voltages AC	100-240V, 50/60 Hz	100-240V, 50/60 Hz	100-240V, 50/60 Hz
Power consumption eco standby mode (watts)	0,3	0,3	0,3
Power consumption multiroom sleep mode (watts)	6	6	6
Ambient temperature while in operation	5-35° C	5-35° C	5-35° C
Relative humidity (non-condensing)	20-80%	20-80%	20-80%
<b>Dimensions</b>			
Weight (approx. kg)	4,5	3,2	1,4
W* x H x D (approx. cm)	22,5 x 40,1 x 21,5	19,6 x 32,1 x 18,7	16,0 x 18,8 x 15,4
<b>Scope of Delivery</b>			
Manual / power cord	●/●	●/●	●/●
Others	—	—	wall mount klang mr1
<b>Optional accessories</b>			
Selection of recommended setup solutions and audio systems	remote klang mr, klang bar5 mr, klang bar3 mr, klang mr5, klang mr3, klang mr1, iconic v, iconic i		

● = available, ○ = optional, — = not available

Technical changes and delivery options are subject to change without notice. The product portfolio may be different and might vary depending on the country. Service matters are all handled individually.

Data sheet

Loewe **home.cinema sets**

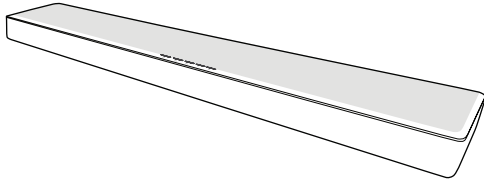
December 2023



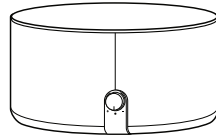
# Loewe **home.cinema set 553**

Soundbar, subwoofer and surround speaker in a set

klang bar5 mr



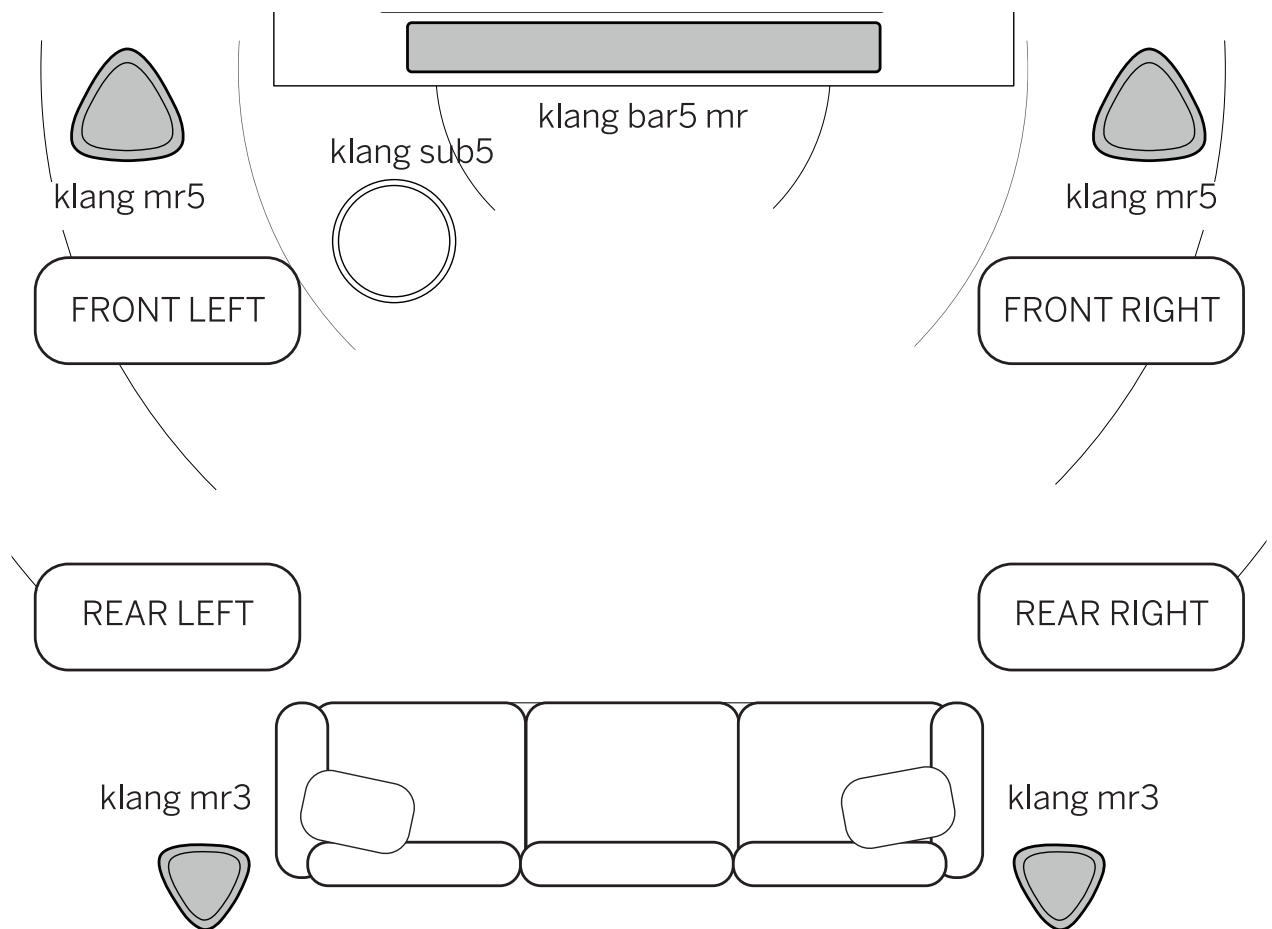
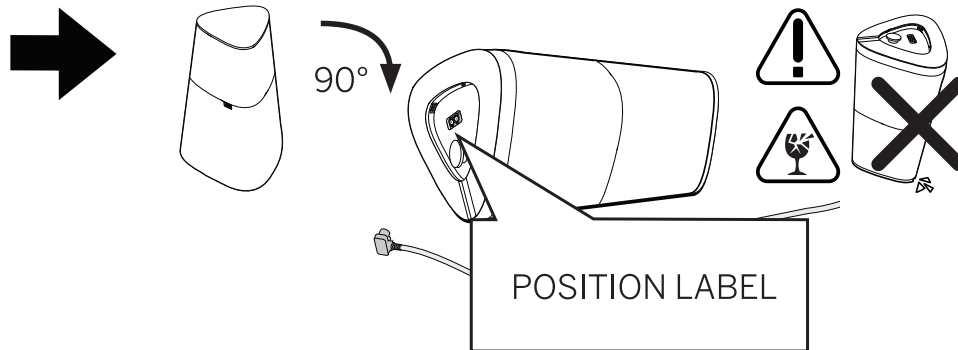
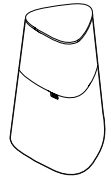
klang sub5



klang mr5



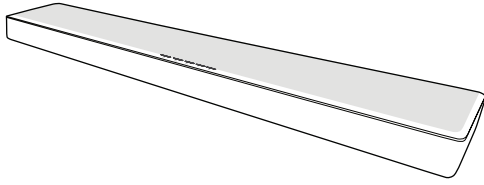
klang mr3



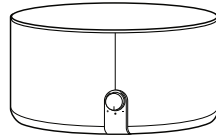
# Loewe **home.cinema set 531**

Soundbar, subwoofer and surround speaker in a set

klang bar5 mr



klang sub5



klang mr3



klang mr1

